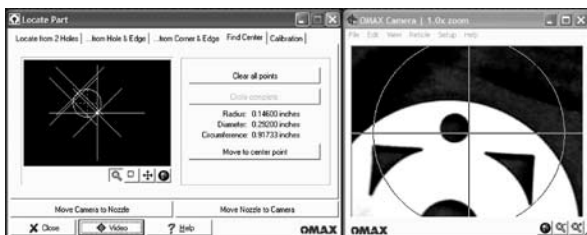




## PRECISION ABRASIVE WATERJET ACCESSORIES



### Quickly lines up existing part features. Software includes:

- Wizard for rotating parts based on features
- Digital Zoom
- Interaction with Layout and Make

## Accessory Specifications

# POL

### Standard Features

- Video/Optical locating system eliminates the need for cumbersome point location using time consuming dial indicators.
- Uses USB camera with microscope lens.
- Operates anywhere on the cutting table to pick up locating points at remote corners of the cutting table without the operator leaving the control console.
- Software package integrates into OMAX Make for Windows® control program.
- Video image of point location can be stored for Quality Control records, if desired.
- Light ring illuminates viewing area.
- OMAX Machine Watcher allows remote monitoring.
- Two USB extension cables.
- Camera tripods (2).
- Camera resolution: 1280 x 1024.
- Carrying case for all accessories.

### Requirements

- Windows upgrade. Contact OMAX Customer Service for information.
- Motorized Z-Axis or Tilt-A-Jet®.

## OMAX® Precision Optical Locator

Precision Optical Locator (POL) ensures precision cutting of pre-machined components.

The POL uses modern compact video technology to precisely locate points, edges or holes on a piece of material placed on the OMAX cutting table. The software package then reorients the cutting program to precisely align with the located features.

# POL

### About OMAX

OMAX is the leader in designing and manufacturing precision abrasive waterjet machining equipment. For more information on what other OMAX products and accessories can do for you, call us today.

### OMAX Corporation

21409 72nd Ave South, Kent, WA 98032  
253-872-2300 **tel** 253-872-6190 **fax**  
1-800-838-0343 **toll-free**  
**WWW.OMAX.COM website**

Printed in the U.S.A © January 2007 All rights reserved. OC-0016

The OMAX Technology Guarantee entitles you, as the original owner, to free OMAX software upgrades for the life of the machine.

